

COACH MODEL	Any
DATE	11.25.2025
SUBJECT	Suspension Bolt Inspection

⚠ Please refer to the appropriate manual for your specific VIN in the Van Hool portal to ensure that you are following the most accurate and up-to-date instructions. ⚠

Carrier bolt inspections should be performed every 12,500 miles, as outlined in the maintenance manual. Below is an example of the correct inspection checks:

1. **Locate** the upper and lower carrier bolt on steer and tag axles (Figures 1 & 2).
2. **Determine** whether bolt is an M18 or M20. (*Ways to check if unsure: check bolt diameter, use a thread gauge tool, or temporarily install M18/M20 nut onto exposed threads.*)
3. **Tighten** the bolt to the applicable torque spec (Figure 3).
 - a. M18: 220 ft-lbs (300 Nm)
 - b. M20: 370 ft-lbs (500 Nm)
4. **Repeat** this for both roadside and curbside of the upper and lower carrier bolts on tag and steer axles (8 total).



Figure 1: Tag Axle - Carrier Bolt



Figure 2: Steer Axle - Carrier Bolt

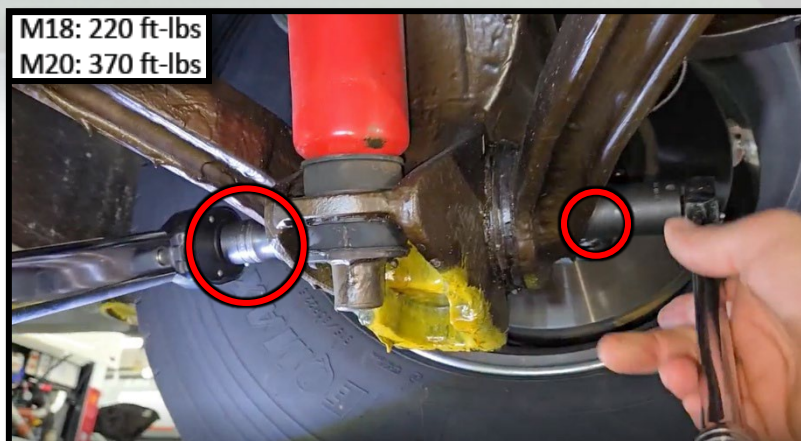


Figure 3: Torque to Applicable